

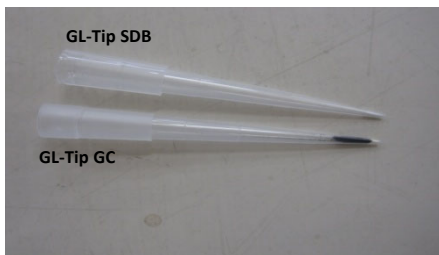
GL-Tip SDB/GC

For proteome analysis, it is necessary to desalt and enrich peptides before introducing samples to MS.

GL Sciences now introduces GL-Tip (200µl) series: GL-Tip SDB, tips packed with Empore DISK SDB (styrene divinylbenzene co-polymer) and GL-Tips GC, tips packed with graphite carbon.

GL-Tip SDB shows stronger retentivity than existing C18 tips. This strong retentivity enables more peptides (proteins) to be captured than trapped by existing C18 tips. GL-Tip GC enables the retention and recovery of highly hydrophilic peptides. Therefore the combination of GL-Tip SDB and GC realizes wider peptide coverage than ever.

GL-Tip adapts centrifuge method.



Features

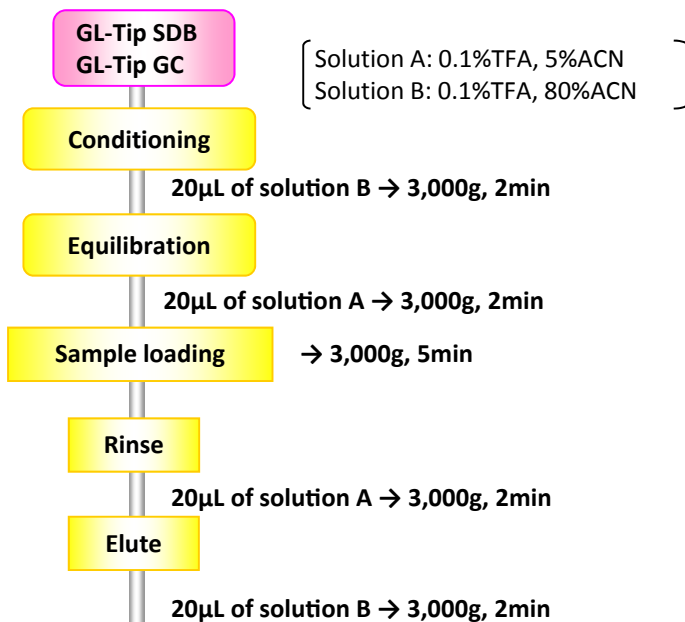
- Highly retentive
- High yield
- Easy to operate

Specifications

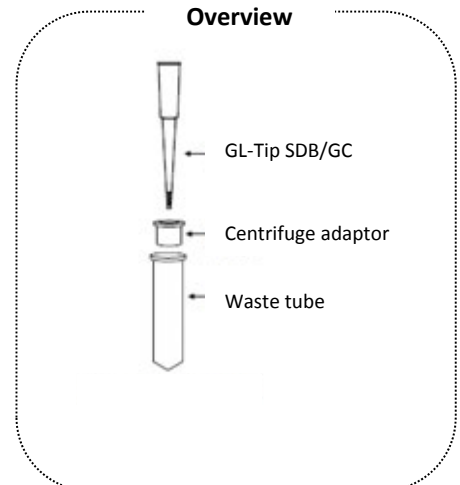
GL-Tip SDB	
Sample	Tyr (PO ₃ H ₂) ₄ -Angiotensin II
Tip volume	200 µL
Binding Capacity	60 µg
GL-Tip GC	
Sample	Gly-Gly-Tyr-Arg
Tip volume	1mg/200 µL
Binding Capacity	30 µg

※The maximum sample loading volume depends on the matrix.

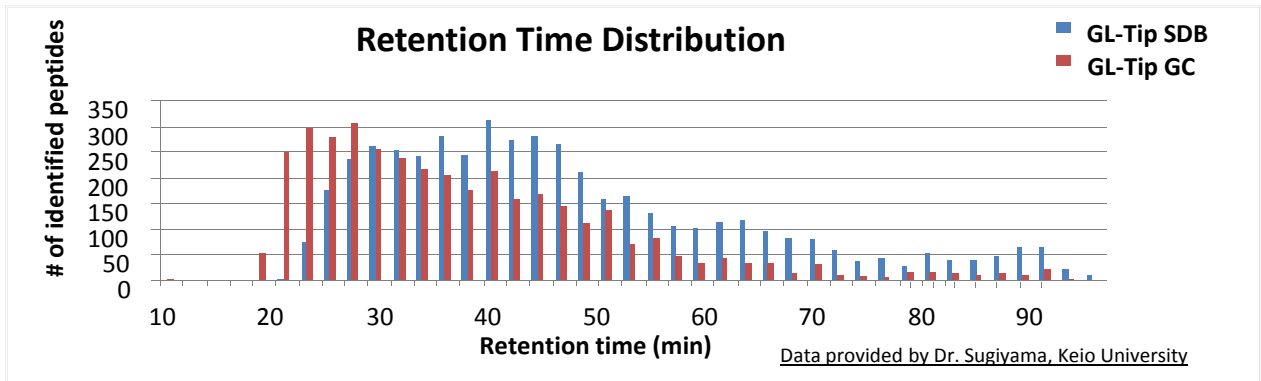
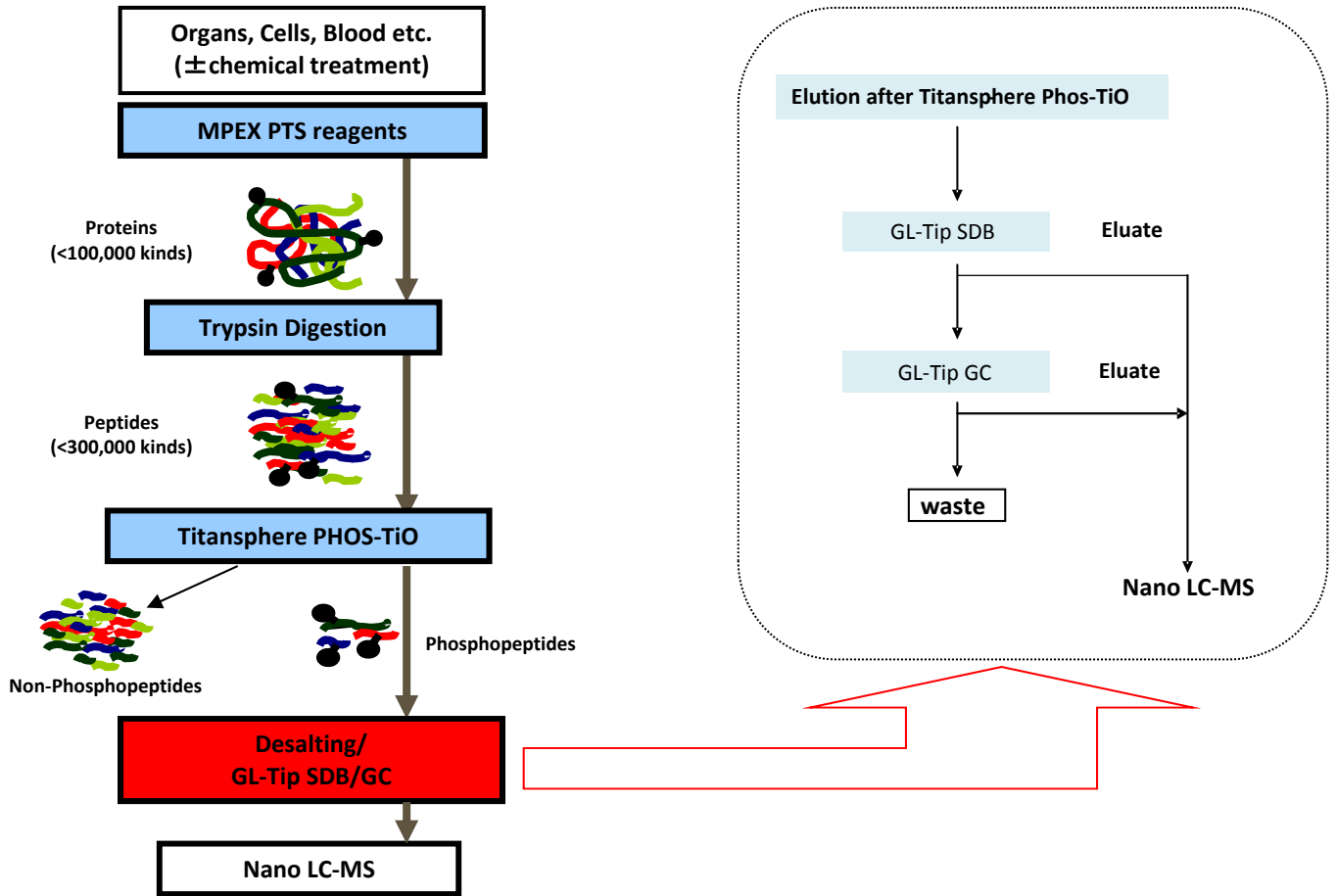
Recommended Protocol



Overview



Phosphopeptide Enrichment using GL-Tip & Titansphere Phos-TiO



The solution containing phosphopeptides enriched by Titansphere Phos-TiO Kit from HeLa cell elution was desalted by GL-Tip SDB and GC. GL-Tip SDB traps a wide range of peptides while GL-Tip GC captures highly hydrophilic peptides.

Ordering Information

Description	Qty	Tip Volume	Cat. No.
GL-Tip SDB	96	200µl	7820-11200
GL-Tip GC	96	200µl	7820-11201
Adaptor for GL-Tip*	1	-	5010-21514

*Please note the adaptor is reusable



Distributor: