

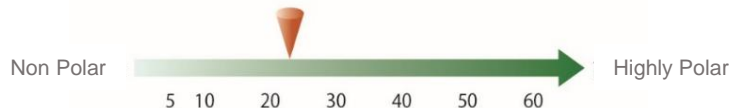
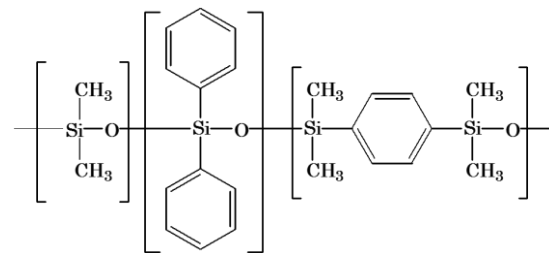
Ultra-low bleed!

GC Capillary Column **InertCap 17MS/Sil**

- Change elution pattern
- Analysis of polycyclic aromatic compounds
- Pesticide analysis
- Metabolomics



Due to the dimethylsilphenylene siloxane in its phase composition, InertCap 17MS/Sil shows very high thermal stability and low bleed. This column is the result of an improvement in the deactivation process which allows this column to reach high levels of deactivation and resistance to high temperatures. InertCap 17MS/Sil is desirable for analysis of pesticides and polycyclic aromatic compounds.



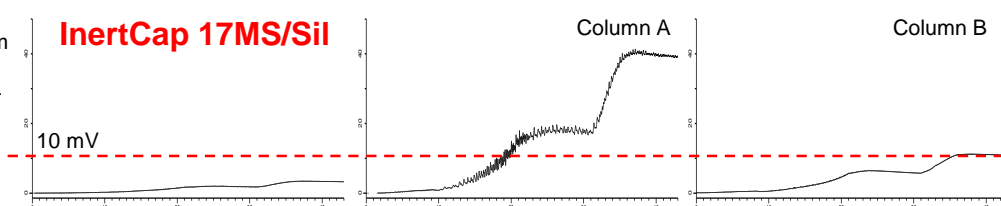
- 50 % Diphenyl(equiv.) - 50 % Dimethylsilphenylene Siloxane
- USP Phase G3
- Medium Polarity
- Cross-Linked
- Suitable for pesticides and PAHs analysis
- Equivalent: DB-17ms, VF-17ms, Rxi-17Sil MS



Low bleed with both FID and MS

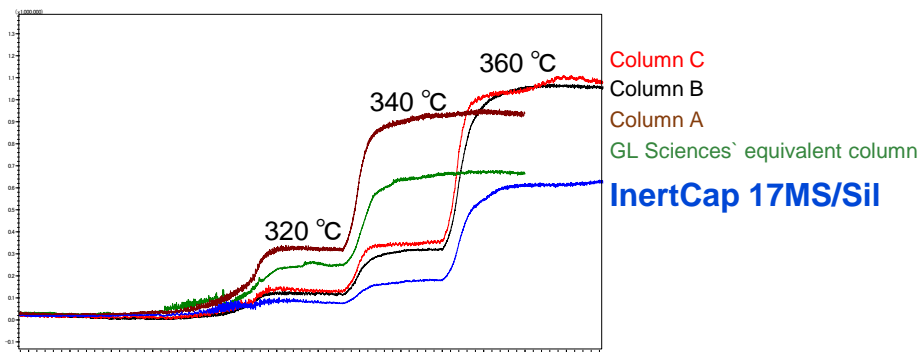
Bleed comparison with FID

System : GC-FID
 Col.Size : 0.25 mm I.D. x 30 m df = 0.25 μ m
 Col.Temp. : 120 $^{\circ}$ C (1 min hold) - 10 $^{\circ}$ C/min - 320 $^{\circ}$ C (10 min hold) - 10 $^{\circ}$ C/min - 340 $^{\circ}$ C (10 min hold)
 Carrier Gas : He 100 kPa
 Injection : 250 $^{\circ}$ C
 Detection : 320 $^{\circ}$ C FID Range 10⁴



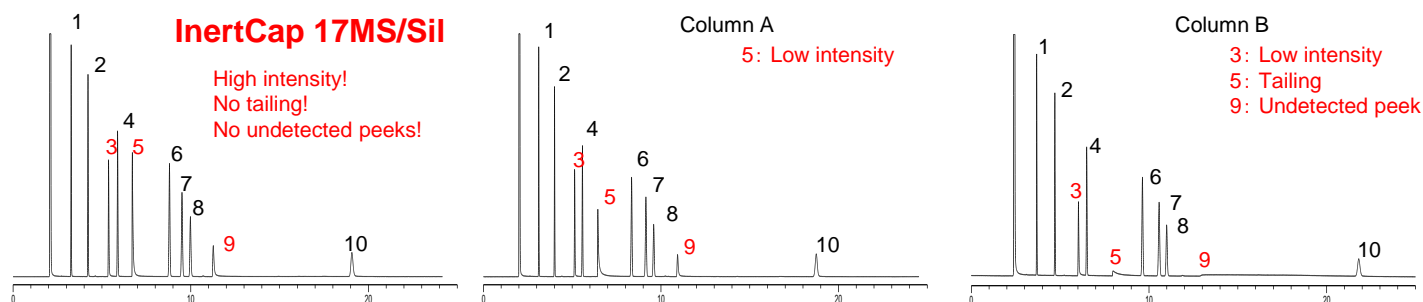
Bleed comparison with MS

System : GC-MS
 Col.Size : 0.25 mm I.D. x 30 m df = 0.25 μ m
 Col.Temp. : 40 $^{\circ}$ C (5 min hold) - 10 $^{\circ}$ C/min - 320 $^{\circ}$ C (10 min hold) - 10 $^{\circ}$ C/min - 340 $^{\circ}$ C (10 min hold) - 10 $^{\circ}$ C/min - 360 $^{\circ}$ C (20 min hold)
 Carrier Gas : He, 1.0 mL/min constant
 Injection : Splitless 250 $^{\circ}$ C
 Detection : MS TIC (m/z 50 - 500)
 MSD I.F.Temp.: 330 $^{\circ}$ C
 I.S. Temp. : 230 $^{\circ}$ C



Improved Deactivation

17-type phase is normally difficult to coat and deactivation is also difficult to maintain. However, due to the improved deactivation process and the adjusted stationary phase, InertCap 17MS/Sil has achieved outstanding levels of deactivation.



System : GC-FID
 Col.Size : 0.25 mm I.D. x 30 m df = 0.25 μ m
 Col.Temp. : 120 $^{\circ}$ C
 Carrier Gas : He 100 kPa
 Injection : 250 $^{\circ}$ C Split 50:1
 Detection : 300 $^{\circ}$ C FID Range 10⁴
 Sample Size : 0.2 μ L

Sample:
 1. *n*-Undecane
 2. *n*-Dodecane
 3. *n*-Nonanol
 4. *n*-Tridecane
 5. *n*-Decylamine
 6. *n*-Tetradecane
 6. *n*-Tetradecane
 7. Naphthalene
 8. Methyl-*n*-Decanoate
 9. 1,7-Heptanediol
 10. 2,4,5-Trichlorophenol

Designed for elution pattern change

Analysis of organic compounds

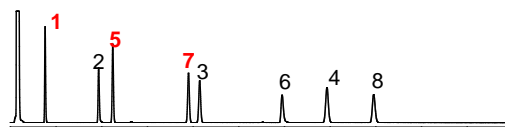
System : GC-FID
 Col.Size : 0.25 mm I.D. x 30 m df = 0.25 µm
 Col.Temp. : 120 °C
 Carrier Gas : He 100 kPa
 Injection : 250 °C Split 50:1
 Detection : 300 °C FID Range 10[^]
 Sample Size : 0.2 µL

Sample :

1. <i>n</i> -Decane	5. <i>n</i> -Dodecane
2. <i>n</i> -Octanol	6. 1-Decanol
3. 2,6-Dimethylphenol	7. <i>n</i> -Tridecane
4. 2,6-Dimethylaniline	8. Methyl- <i>n</i> -Decanoate

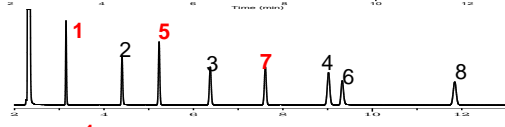
InertCap 17MS/Sil

Phase: Diphenyl(equiv.) 50 %



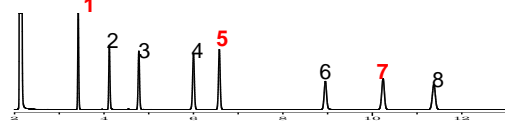
InertCap 35MS

Phase: Diphenyl(equiv.) 35 %



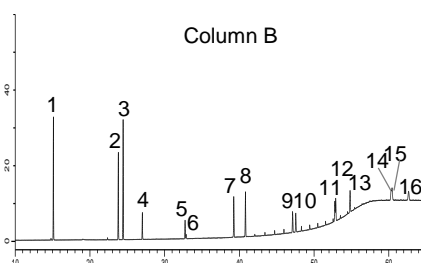
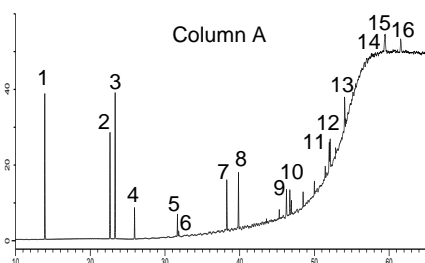
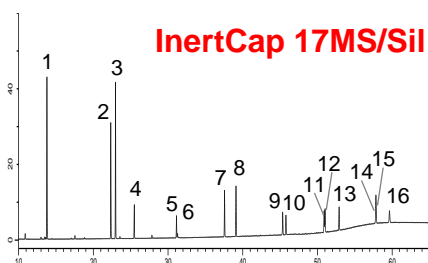
InertCap 5MS/Sil

Phase: Diphenyl(equiv.) 5 %



Designed for PAHs analysis

Analysis of polycyclic aromatic compounds



System : GC-FID
 Col.Size : 0.25 mm I.D. x 30 m df = 0.25 µm
 Col.Temp. : 80 °C (3 min hold) - 5 °C/min - 340 °C
 Carrier Gas : He 100 kPa
 Injection : 250 °C Split flow 5 mL/min
 Detection : 340 °C FID Range 10[^]
 Sample Size : 1.0 µL

Sample :

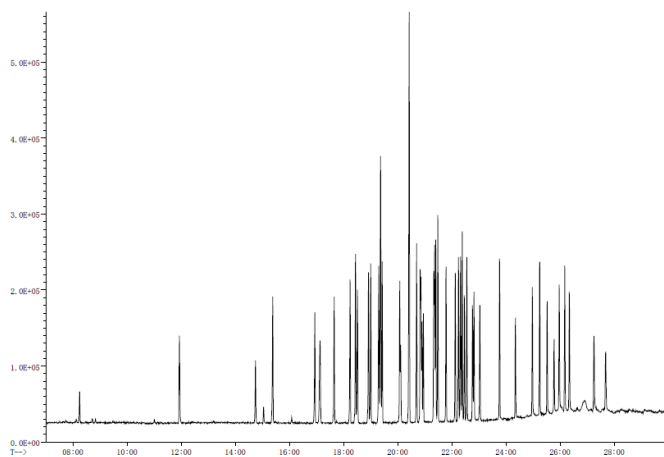
1. Naphthalene	7. Fluoranthene	12. Benzo[k]fluoranthene
2. Acenaphthylene	8. Pyrene	13. Benzo[a]pyrene
3. Acenaphthene	9. Benz[a]anthracene	14. Indeno (1,2,3-C,D)pyrene
4. Fluorene	10. Chrysene	15. Dibenz[a,h]anthracene
5. Phenanthrene	11. Benzo[b]fluoranthene	16. Benzo[ghi]perylene
6. Anthracene		

Analysis of pesticides

System : GC-MS
 Column : InertCap 17MS/Sil
 Col.Size : 0.25 mm I.D. x 30 m df = 0.25 µm
 Col.Temp. : 50 °C (1 min hold) - 10 °C/min - 300 °C (4 min hold)
 Carrier Gas : 1.0 mL/min
 Injection : 250 °C
 MSD I.F. Temp.: 300 °C
 I.S. Temp. : 200 °C
 Sample Size : 1 µL

Sample :

Elution time	Elution time
1 0:11:56 Dichlorvos	15 0:20:05 Chlorpyrifos methyl
2 0:14:45 Mevinphos	16 0:20:07 Phosphamidon
3 0:15:23 Methacrifos	Parathion methyl
4 0:16:56 Ethoprophos	+ Pirimiphos methyl
5 0:17:08 Cadusafos	+ Tolclofos methyl
6 0:17:39 Phorate	18 0:20:42 Chlorpyrifos
7 0:18:14 Terbufos	19 0:20:50 Malathion
8 0:18:27 Diazinon	20 0:20:51 Dimethylvinphos (E or Z)
9 0:18:31 Salithion	21 0:20:54 Fenitrothion
10 0:18:55 Fonofos	22 0:20:57 Parathion
11 0:19:00 Etrimfos	23 0:21:20 Dimethylvinphos (E or Z)
12 0:19:18 Cyanophos	24 0:21:22 Chlorfenvinphos (E or Z)
13 0:19:22 Dichlofenthion	25 0:21:24 Fenthion
+ Dimethoate	26 0:21:29 Isofenphos
14 0:19:26 Isazophos	27 0:21:47 Chlorfenvinphos (E or Z)



Elution time	Elution time
28 0:22:07 Quinalphos	38 0:24:21 Fensulfothion
29 0:22:15 Propaphos	39 0:24:59 Triazophos
+ Fosthiazate	40 0:25:15 Edifenphos
30 0:22:19 Phenthoate	41 0:25:31 Piperophos
31 0:22:23 Prothiofos	42 0:25:47 EPN
32 0:22:28 Butamifos	43 0:25:58 Pyridaphenthion
33 0:22:33 Tetrachlorvinphos	44 0:26:10 Anilofos
34 0:22:46 Fenamifos	45 0:26:20 Phosalone
35 0:22:49 Profenophos	46 0:27:15 Pyraclofos
36 0:23:02 Methidathion	47 0:27:41 Azinphos methyl
37 0:23:46 Ethion	

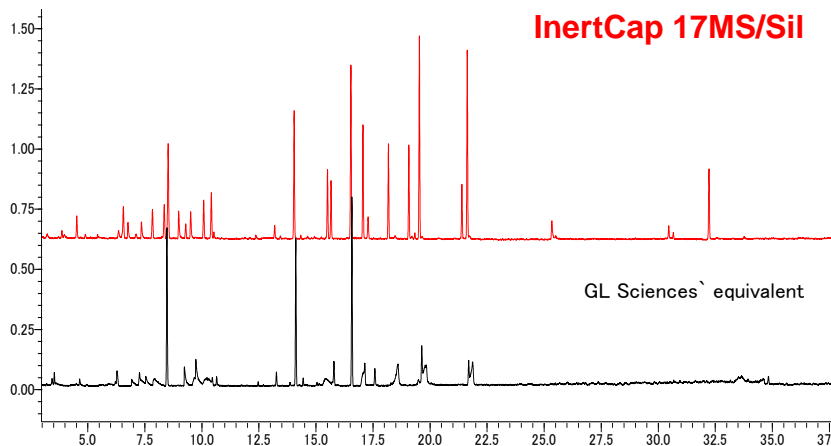
No qualitative analysis was done on the standard samples.

Suitable for Metabolomic Analysis

Analysis of amino acid derivatives

Due to the improved deactivation of InertCap 17MS/Sil, it is now possible to detect more compounds than before.

System : GC-MS
Col.Size : 0.25 mm I.D. x 30 m df = 0.25 μ m
Col.Temp. : 80 °C (2 min hold) - 5 °C/min - 330 °C
Carrier Gas : He, 39 cm/sec
Injection : 250 °C Split 25:1
Detection : MS TIC (m/z 85 - 500)
MSD I.F.Temp.: 250 °C
I.S. Temp. : 200 °C
Sample Size : 1 μ L



GL Sciences disclaims any and all responsibility for any injury or damage which may be caused by this data directly or indirectly. We reserve the right to amend this information or data at any time and without any prior announcement.

GL Sciences, Inc. Japan

22-1 Nishishinjuku 6-Chome
Shinjuku-ku, Tokyo,
163-1130, Japan
Phone: +81-3-5323-6620
Fax: +81-3-5323-6621
Email: world@glsc.co.jp
Web: www.glsciences.com

GL Sciences B.V.

De Sleutel 9
5652 AS Eindhoven
The Netherlands
Phone: +31 (0)40 254 95 31
Email: info@glsciences.eu
Web: www.glsciences.eu

GL Sciences (ShangHai) Ltd.

Tower B, Room 2003,
Far East International Plaza,
NO,317 Xianxia Road,
Changning District.
Shanghai, China P.C. 200051
Phone: +86 (0)21-6278-2272
Email: contact@glsciences.com.cn
Web: www.glsciences.com.cn

GL Sciences, Inc. USA

4733 Torrance Blvd. Suite 255
Torrance, CA 90503
Phone: 310-265-4424
Fax: 310-265-4425
Email: info@glsciencesinc.com
Web: www.glsciencesinc.com

International Distributors

Visit our Website at www.glsciences.com/distributors

